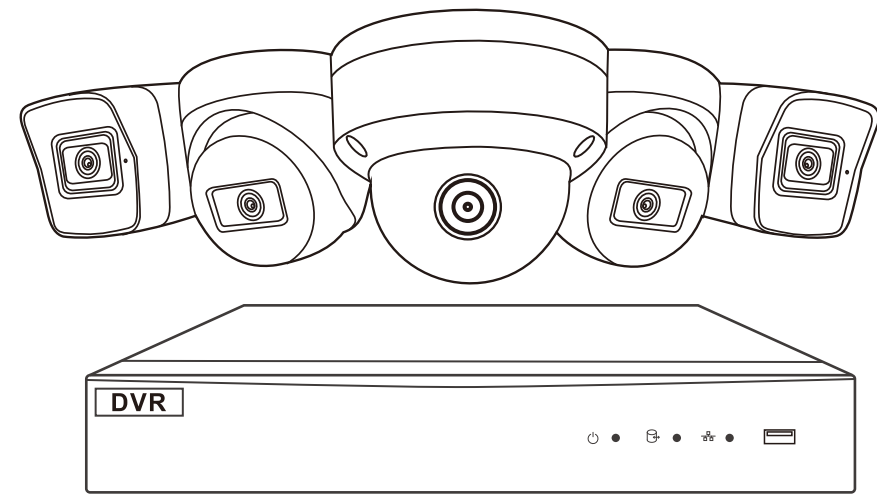




# HD DVR System Quick Start Guide



<https://www.anpvizsecurity.com>

## Technical Support

If you need any technical help, please visit our official support site and contact our support team before returning the products, [support@anpvizsecurity.com](mailto:support@anpvizsecurity.com)



Scan the QR code to view How-to operation video

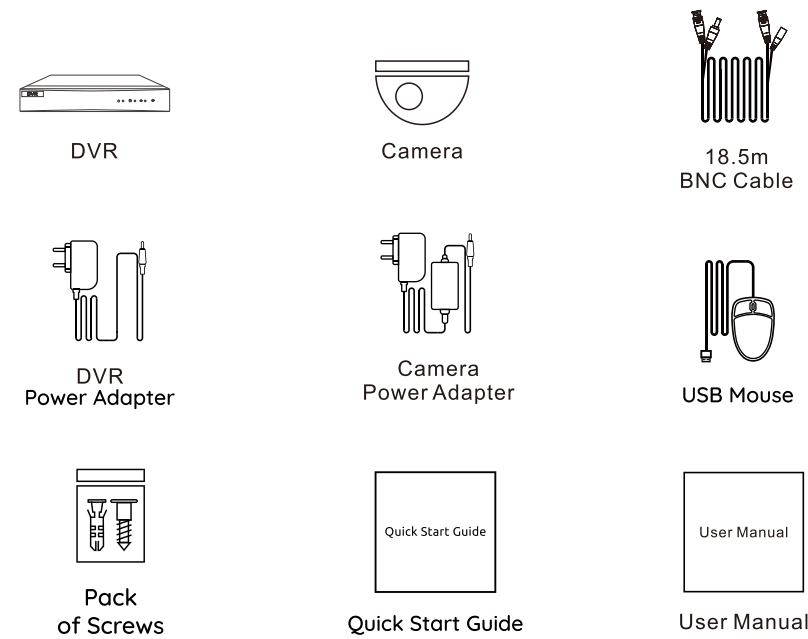


Facebook



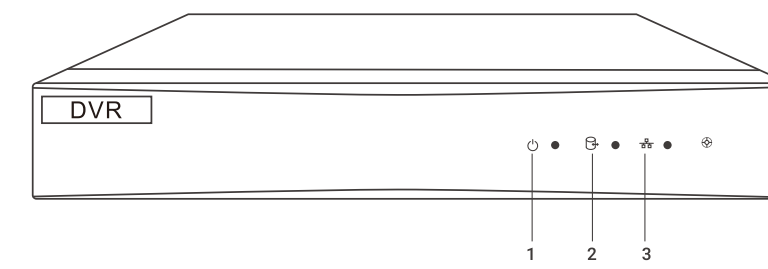
Official website

## 1.What's in the Box



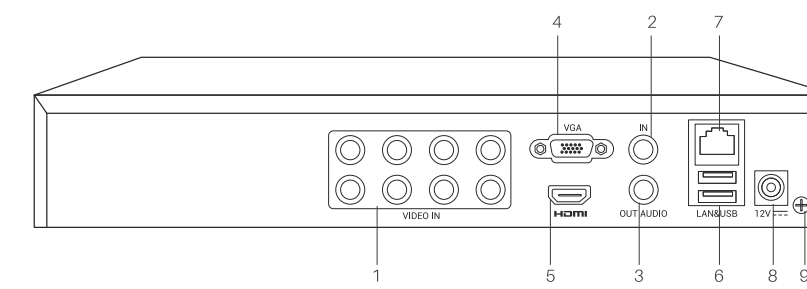
**NOTE:**Quantity of devices and accessories vary by different models that you purchase.

## 2.Description



Description of Front Panel

NO.	Icon	Description
1		Turns yellow when DVR is powered up.
2		Turns red when data is being read from or written to HDD.
3		Flickers yellow when network connection is functioning properly.



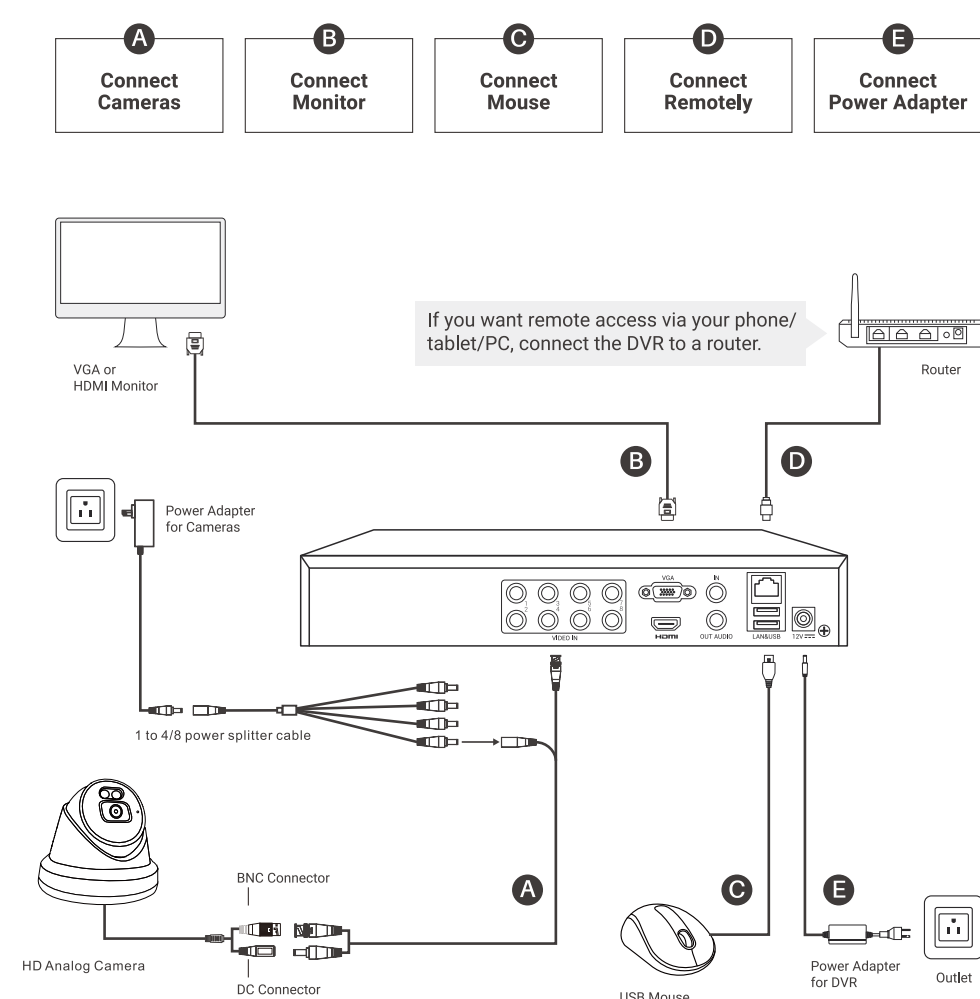
Description of Rear Panel

No.	Item	Description
1	VIDEO IN	BNC interface for video input
2	AUDIO IN	RCA connector
3	AUDIO OUT	RCA connector
4	VGA	VGA video output connector
5	HDMI	HDMI video output connector
6	USB Port	USB port for mouse or U disk.
7	Network Interface	Connector for network
8	Power Supply	12V DC power supply.
9	GND	Ground

## 3.Connection Diagram

### Steps:

1. Connect the cameras BNC Female port and DC Female port to the video cables BNC Male port and DC Male port connect the video cables BNC Male port to the DVR BNC Female port, connect the video cables DC Female port to the power splitter cables DC Male port, connect the power splitter cable's DC Female port to the power Male port
2. Connect the monitor VGA cable or HDMI cable to the DVR VGA port or HDMI port.
3. Connect the DVR RJ-45 port to the router LAN by network cable.
4. Connect the mouse USB Male port to the DVR USB Female port.
5. Connect the DVR power adapter.



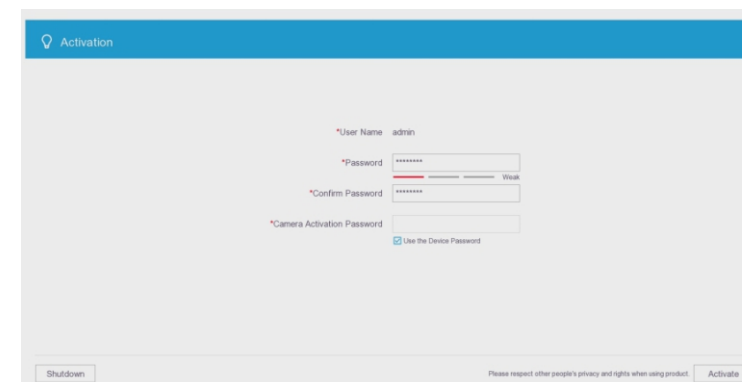
## 4.System Setup

We suggest following the wizard to set up your DVR step by step. Wizard setup;

1. Create the DVR's password.
2. Set reserved E-mail and backup GUID files.
3. Set unlock pattern and security questions.
4. Setting signal input status.
5. Choose the system's language.
6. Configure the time zone.
7. Configure the IP Address and P2P function.
8. Configure the ports and other settings.

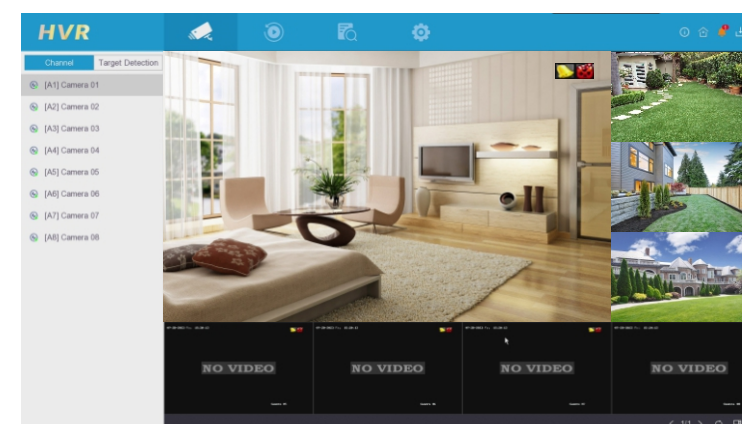
### A: Create your passwords

For the first-time access, you need to activate the device by setting an admin password. Input your password three times to create it. And we recommend you reset your password monthly to protect your privacy better.



### Live View

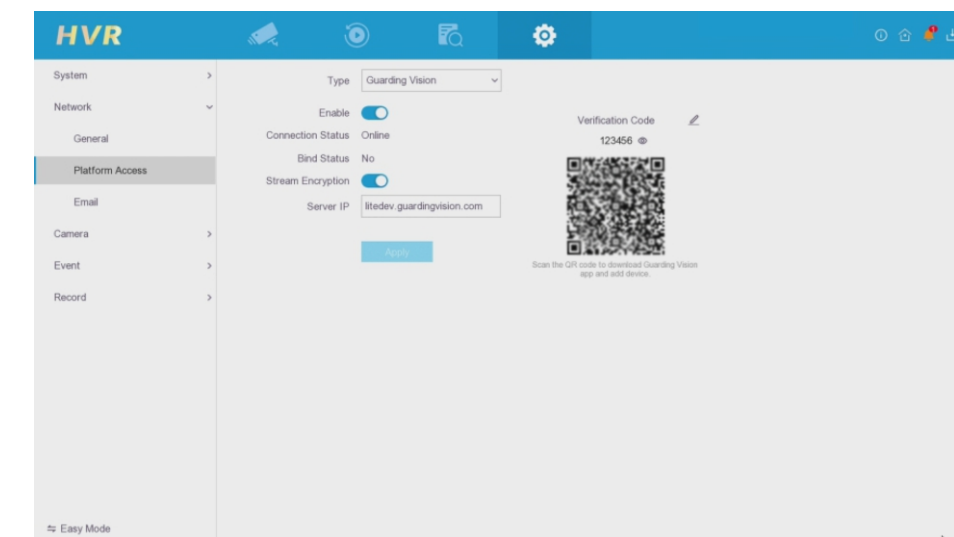
In Live View mode, icons are provided on the screen to indicate different camera states. In the real-time viewing mode, there is an icon in the upper right corner of the screen of each channel, which shows the recording and alarms status of the channel, so that you can find the problem at the first time.



## 5.Access the System via Smartphone or PC

### On Smartphone

A: Connect DVR to the internet  
Connect your DVR to your router by a network cable, go to **Menu>Configuration>Network>Platform Access**.  
Make sure the status of P2P shows Online.



B. Download and install App  
Download our free "Guarding Vision" App from Google Play or Apple Store, or just scan the QR code below to download the app.



App



C. Add Device  
Login to the App, follow the App adding steps, scan the device QR code to add the device, and you can preview it normally.

### On PC

Download and launch the iVMS4200 or Guarding Vision Client software and follow the instructions to access the DVR.  
[https://www.anpvizsecurity.com/Download/ Software&tools/HK Series](https://www.anpvizsecurity.com/Download/Software&tools/HK Series)  
For more operate information, Please refer to the User Manual.